

# Groove Tube

## What Is Hip ?

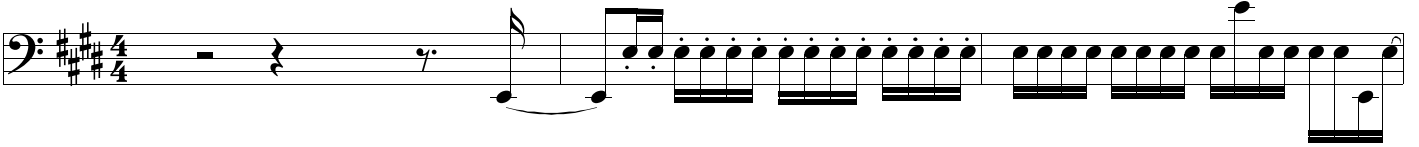
Bass Line originally played by Francis "Rocco" Prestia  
Transcription by Pierre Verger, 1988  
For an easier study, my advice to you is to buy the original recording

As recorded by Tower Of Power, 1973  
Composer : S. Kupka / Emilio Castillo / David Garibaldi  
From the Warner Bros album " Tower Of Power "

1 ♩ = 102

2

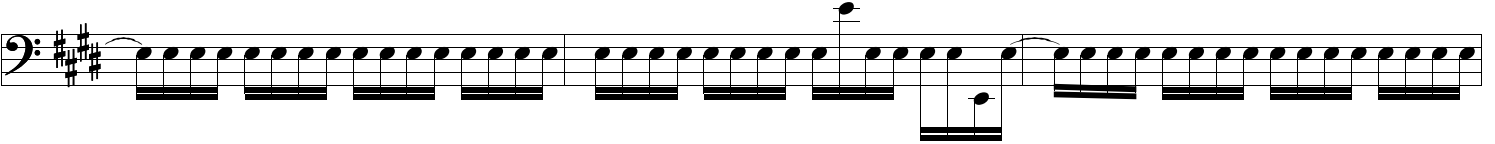
3



4

5

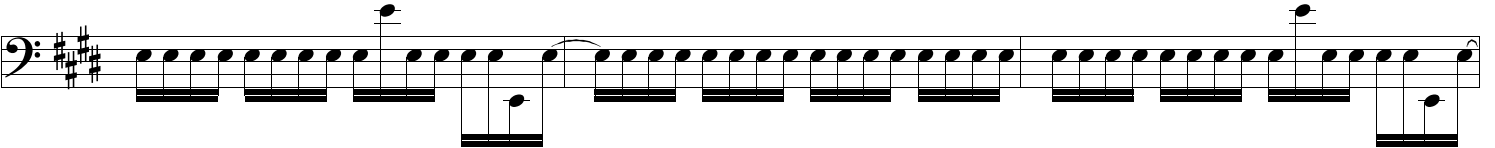
6



7

8

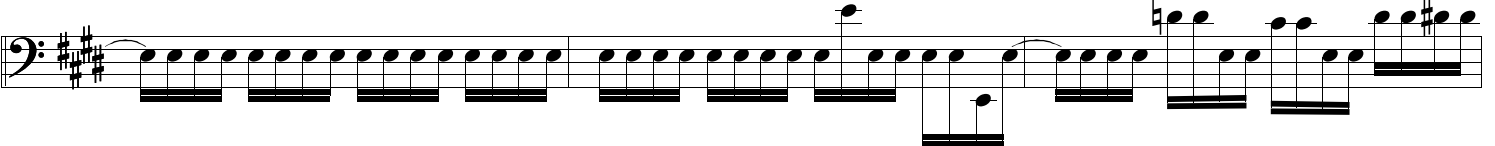
9



10

11

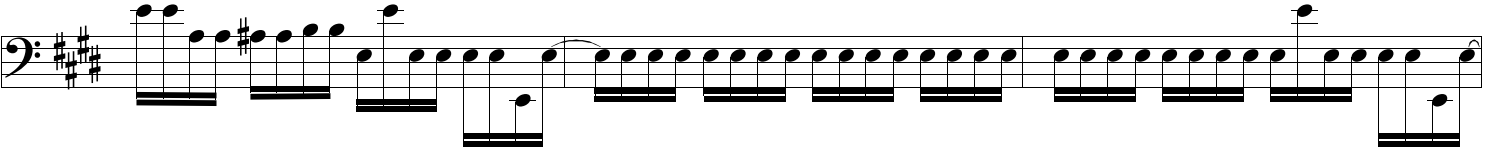
12



13

14

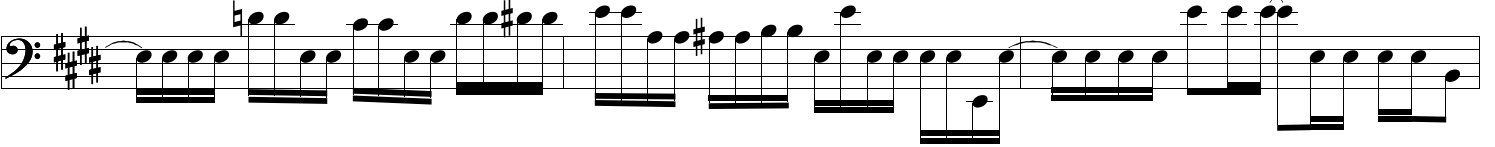
15



16

17

18



19

20

21



22

23

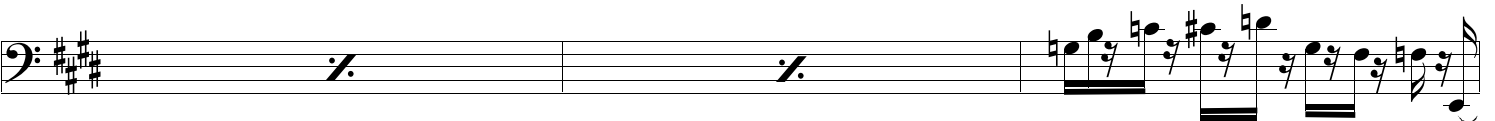
24



25

26

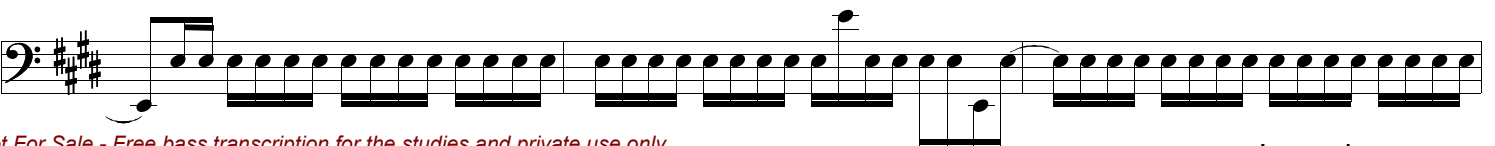
27



28

29

30



This image displays a bass sheet music score for measures 31 through 63. The music is written in a single system with a key signature of three sharps (F#, C#, G#) and a common time signature. The notation includes various rhythmic patterns such as eighth and sixteenth notes, rests, and dynamic markings like accents (>) and slurs. Measure 34 features a first ending bracket labeled '1.' and measure 36 features a second ending bracket labeled '2.'. Measure 43 contains a double bar line with a repeat sign (//). Measure 45 ends with a double bar line and a repeat sign (//). The score concludes with a final double bar line at the end of measure 63.

This image displays a bass sheet music score for measures 64 through 96. The music is written in a single system with a key signature of three sharps (F#, C#, G#) and a common time signature. The notation includes various rhythmic values such as eighth, sixteenth, and thirty-second notes, as well as rests, slurs, and dynamic markings like 'sl.' (sforzando). Measure numbers 64, 65, 66, 67, 68, 69, 70, 71, 72, 73, 74, 75, 76, 77, 78, 79, 80, 81, 82, 83, 84, 85, 86, 87, 88, 89, 90, 91, 92, 93, 94, 95, and 96 are clearly marked above the staff. The score concludes with a double bar line and repeat dots at the end of measure 96.

97 98 99

100 101 102

103 104 105

106 107 108

109 110 111

112 113 114

115 116 117

118 119 120

121 122 123

124

sl. sl. sl. sl.

https://jamusbass9.wixsite.com/groovetubebass

Detailed description: This image shows a page of bass sheet music for measures 97 through 124. The music is written in a bass clef with a key signature of three sharps (F#, C#, G#). The notation includes eighth and sixteenth notes, rests, and slurs. Slurs are labeled 'sl.' above the notes. Measure 124 is a whole rest. The page number '124' is in a box at the bottom left. A URL is at the bottom right.